

PLANT LIST

<u>BOTANICAL NAME</u>	<u>COMMON NAME</u>	<u>SIZE-ROOT</u>	<u>REMARKS</u>
<i>Acer rubrum</i>	"October Glory"	14-16 Ht., 3-3.5" cal; B&B	Red fall color
<i>Acer saccharum</i>	"Legacy"	14-16 Ht., 3-3.5" cal; B&B	Orange fall color
<i>Fraxinus pennsylvanica</i>	"Summit"	14-16 Ht., 3-3.5" cal; B&B	Yellow fall color
<i>Gleditsia triacanthos</i>	"Inermis Shademaster"	15-17 Ht., 3-3.5" cal; B&B	Light texture
<i>Quercus acutissima</i>	"Northern Red Oak"	13-15 Ht., 3-3.5" cal; B&B	Fast growing
<i>Quercus borealis</i>	"Crownright"	13-15 Ht., 3-3.5" cal; B&B	Large area, scarlet fall
<i>Platanus x acerifolia</i>	"London Plane Tree"	13-15 Ht., 3-3.5" cal; B&B	Burnt orange fall color
<i>Zelkova serrata</i>	"Japanese Zelkova"	14-16 Ht., 3-3.5" cal; B&B	Large areas only Elm-like in habit

EVERGREEN TREES

<i>Juniperus chinensis</i>	"Hetzi Columnaris"	3-3.5 Ht.; B&B	Upright evergreen
<i>Taxus x media</i>	"Hicksii"	2.5-3' Ht.; B&B	Upright evergreen
<i>Thuja occidentalis</i>	"Emerald"	3-3.5 Ht.; B&B	Upright evergreen

SHRUBS, GROUNDCOVERS, GRASSES

<i>Abelia grandiflora</i>	"Glossy Abelia"	2-2.5' Ht.; #5 can	Evergreen, flowers
<i>Calamagrostis acutiflora</i>	"Stricata"	18-24" Ht.; #2 can	Light texture, plumes
<i>Clethra alnifolia</i>	"Compaact"	2-2.5' Ht.; B&B	Summer aroma
<i>Euroxylum fontanei</i>	"Emerald 'n' Gold"	18-24" Ht.; #2 can	Gold foliage
<i>Euonymus kiautschovicus</i>	"Manhattan"	2-2.5' Ht.; #5 can	Semi-evergreen, fruit
<i>Hedera helix</i>	"Ballata"	3 years old; 4" peat pot	Everg. groundcover
<i>Ilex crenata</i>	"Green Lustre"	18-24" Ht.; #3 can	Deep evergreen
<i>Ilex glabra</i>	"Compaact"	2-2.5' Ht.; B&B	Hardy and evergreen
<i>Juniperus chinensis</i>	"Seagreen"	18-24" Sp.; #3 can	Great for screening
<i>Juniperus horizontalis</i>	"Bar Harbor"	18-24" Ht.; #3 can	Everg. groundcover
<i>Miscanthus sinensis</i>	"Gracillimus"	18-24" Ht.; #3 can	King of decor. grasses
<i>Miscanthus sinensis</i>	"Purpurascens"	18-24" Ht.; #3 can	Purple limited foliage
<i>Myrica pensylvanica</i>	"Northern Bayberry"	2-2.5' Ht.; B&B	Evergreen, berries
<i>Panicum virgatum</i>	"Heavy Metal"	15-18" Ht.; #2 can	Blue-gray vert. grass
<i>Pennisetum alopecuroides</i>	"Fountain Grass"	15-18" Ht.; #3 can	Soft, with plumes
<i>Spiraea x bumalda</i>	"Anthony Waterer"	18-24" Ht.; #3 can	Pink, summer flowers
<i>Viburnum carlesii</i>	"Compaact"	2-2.5' Ht.; B&B	Pink-white flowers
<i>Vincetoxicum</i>	"Peatwinkle"	3 years old; 4" peat pot	Flower. everg. groundcovr

PERENNIALS & OTHER POT PLANTS

<i>Aster x frikartii</i>	"Monch"	24" Height	Lavender-blue flower, July - Oct
<i>Ceropegia verticillata</i>	"Moonbeam"	18" Height	Pale yellow flower, June - frost
<i>Hemerocallis</i>	"Happy Returns"	18" Height	Lemmon yellow flower, June - Oct
<i>Hydrangea macrophylla</i>	"Lacecap"	3' Height	Intense blue flower, Summer
<i>Liriope muscari</i>	"Majestic"	8" Height	Violet flower, Aug - Sept
<i>Myosotis scorpioides</i>	"Semperflorens"	8" Height	Bright blue, Late May to frost
<i>Narcissus</i>	"Lee Follies"	16" Height	White w/yellow, Apr - May
<i>Primula sieboldii</i>	"Mikado"	8" Height	Rosy purple flower, Apr - June
<i>Rudbeckia fulgida</i>	"Goldsturm"	24" Height	Golden yellow orange, July - Oct
<i>Tulipa praestans</i>	"Fusilier"	10" Height	Scarlet flower, April

ANNUALS

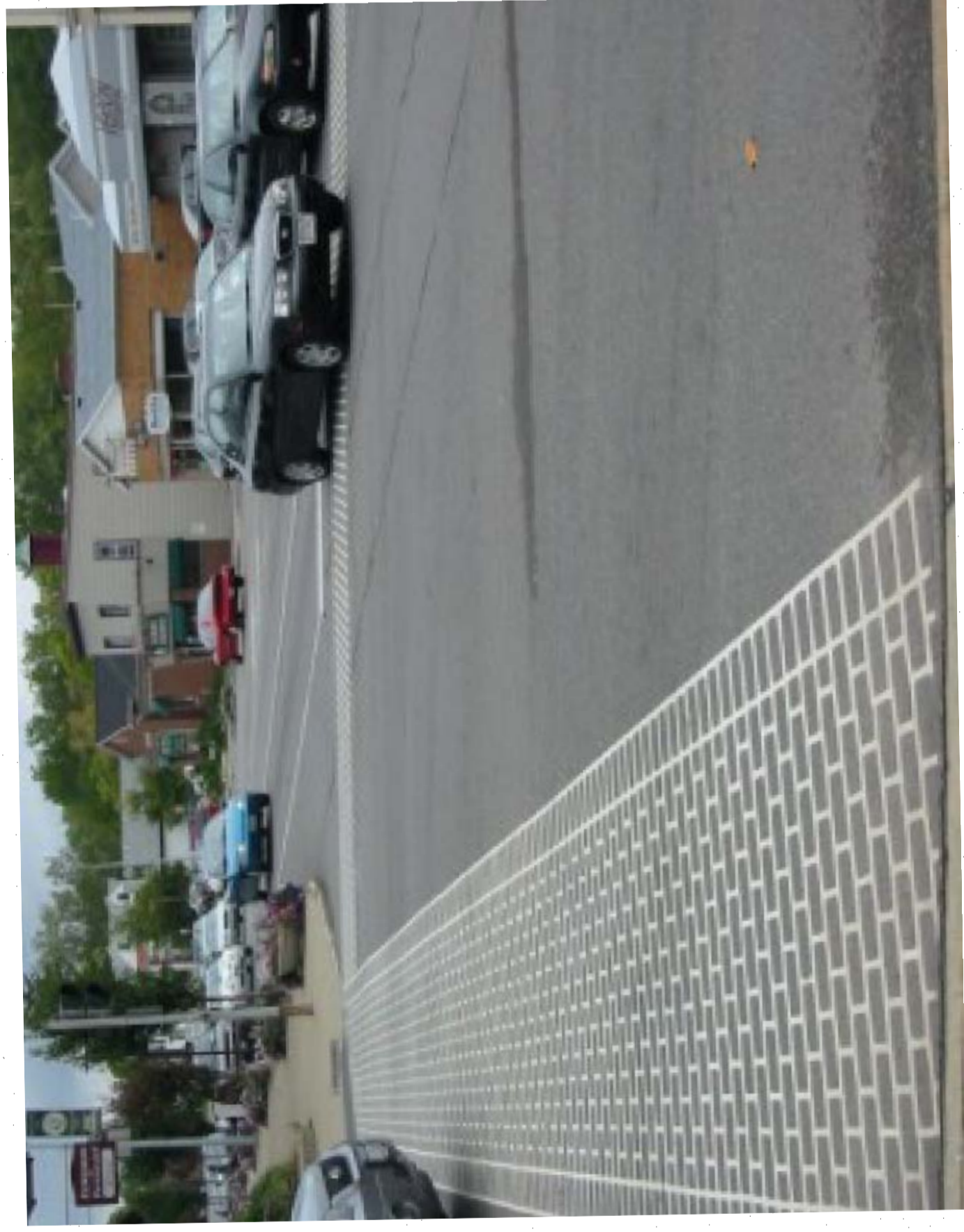
Unlimited palette. Change seasonally to create varying flowering exhibits in different locations in the downtown.



Kornegay Design Nutshell Concrete Landscape Containers 28" dia. x 13.5" ht.



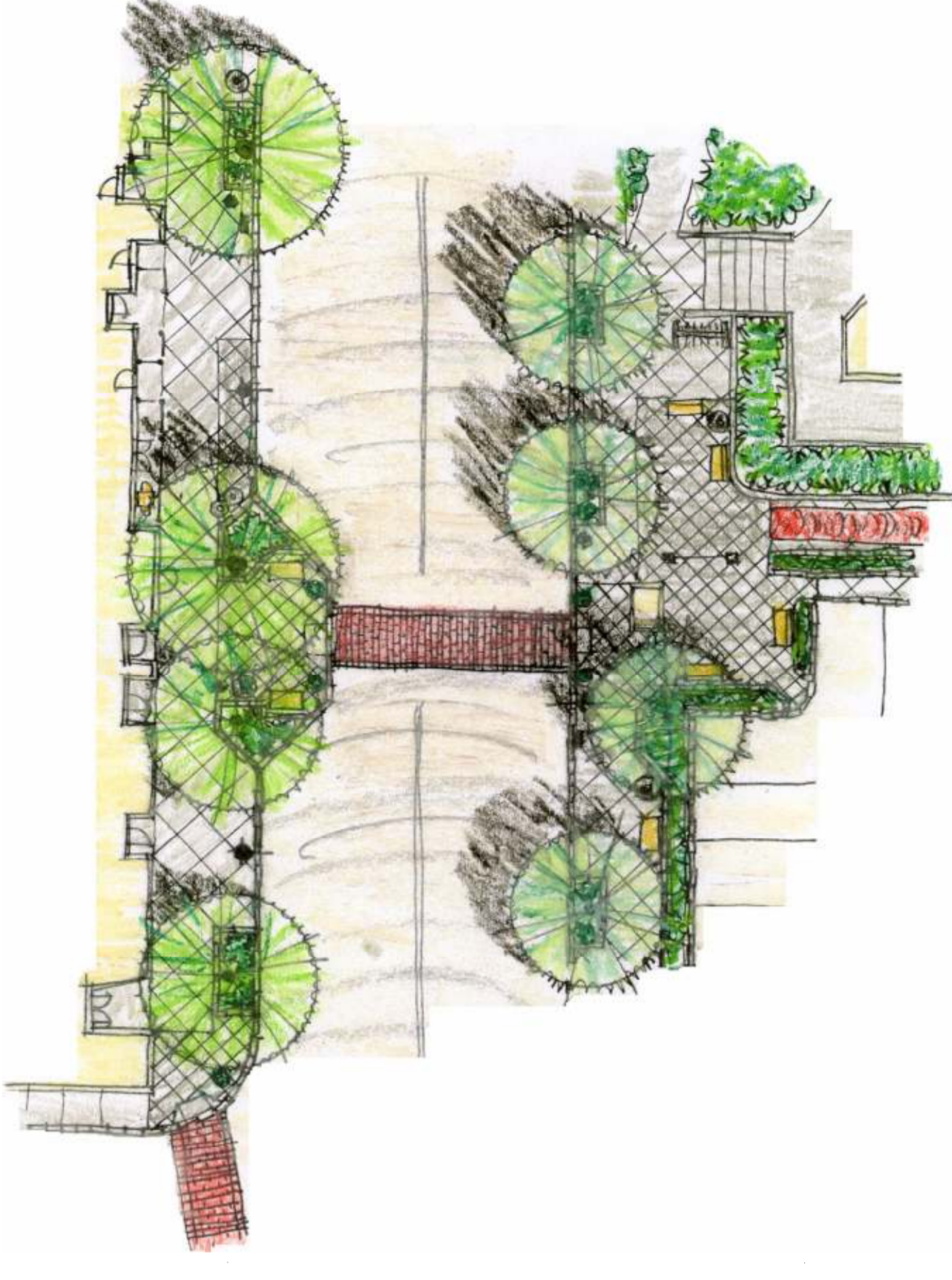
Kevin Lynch & Sons No. 6743 Bike rack. Adaptation of World's Fair Bench design



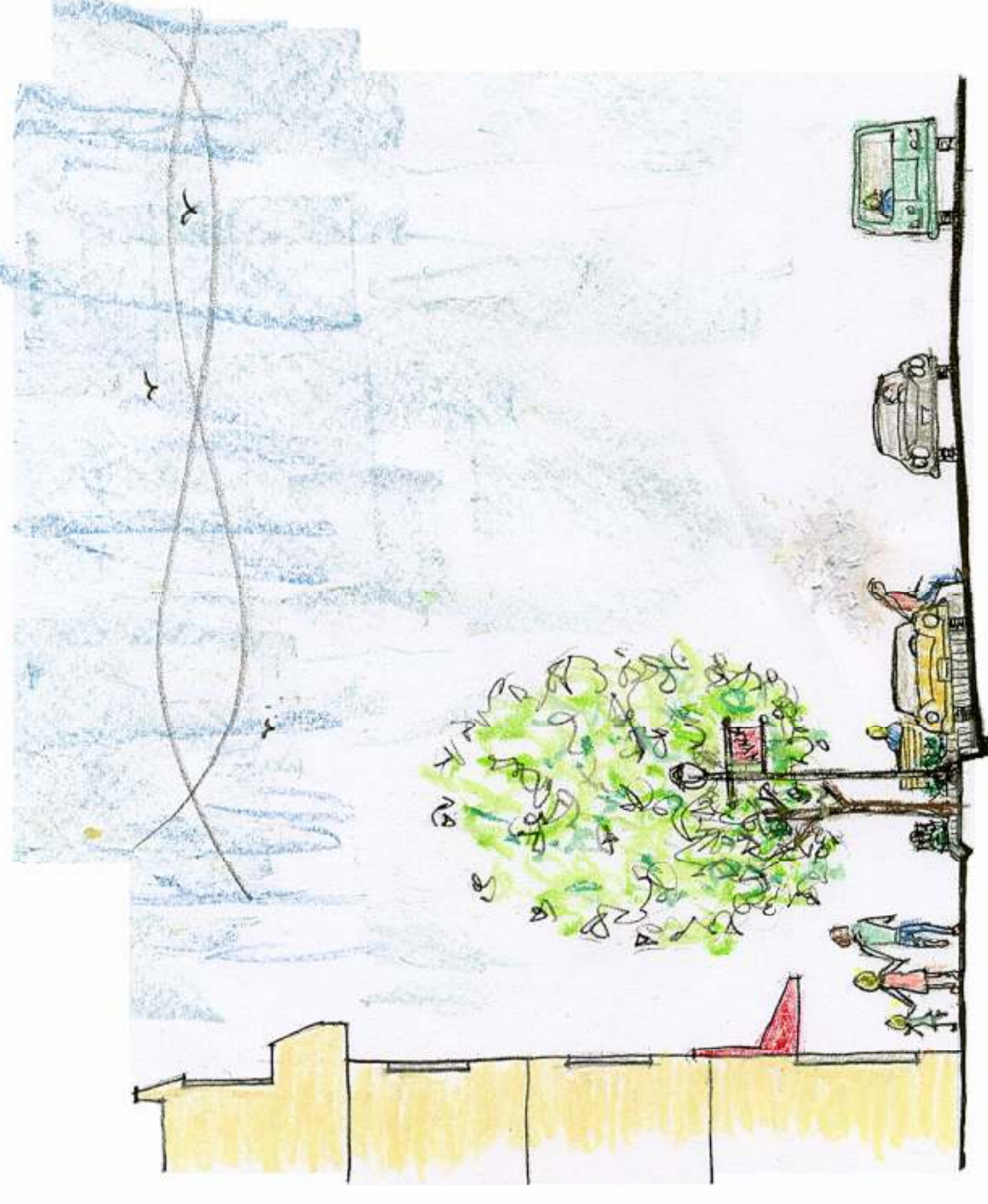
Kevin Lynch & Sons No. 6736 5 foot long Worlds Fair Backless Bench



Victor Stanley Ironsties Series S-20 Ash Urn



ENLARGED ILLUSTRATIVE STREETScape PLAN
N.T.S.



TYPICAL CROSS SECTION
N.T.S.

**STREETScape IMPROVEMENT PROJECT
ILLUSTRATIVE SITE & LANDScape IMPROVEMENT PLAN**

VILLAGE OF NYACK, TOWN OF ORANGETOWN, ROCKLAND COUNTY, NEW YORK

April 18, 2008 Original Scale: 1" = 20' Drawn By: mgh Job No. 0710 Sheet 1 of 2

Rev'd 4/16/08



HAKIM ASSOCIATES
LANDSCAPE ARCHITECTURE, PROFESSIONAL PLANNING,
NATURAL RESOURCES CONSULTING



...harmony between man and his environment...

68 Dean Street
Barrington Park, New Jersey 07640
Tel: 201-261-4800; Fax: 201-769-0200; michael@hakimassociates.com

Michael G. Hakim, RLA, CLA, FP
Member, American Society of Landscape Architects

License No. 01138, NY Lic. #731; CT Lic. #5915; PA Lic. #0528; RI Lic. #1518; MA Lic. #521; KY Lic. #306
Professional Photographer
NY Lic. #121112